

CENTRO UNIVERSITÁRIO DE LAVRAS
TRABALHO DE CONCLUSÃO DE CURSO

1/38



ÉTOILE

BALLET

ORIENTADORA: MARISA PEREIRA
DISCENTE: SANDRA THOMAZ ALVARENGA

SUMÁRIO

03 Introdução

04 Análise e Diagnóstico

10 Conceito

11 Partido

12 Programa de Necessidades /
Pré Dimensionamento

13 Fluxograma e Setorização

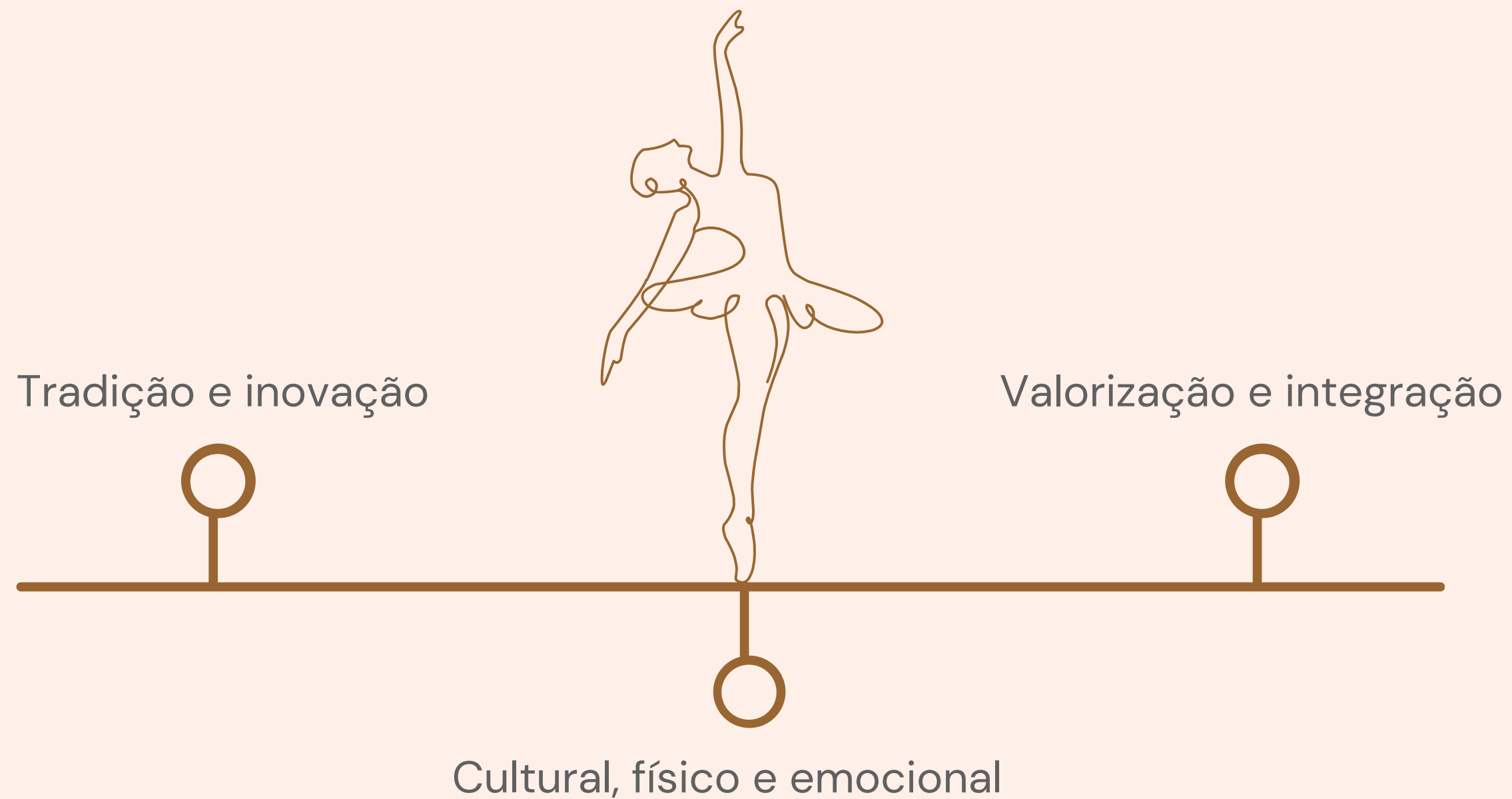
15 Projetos

25 Perspectivas

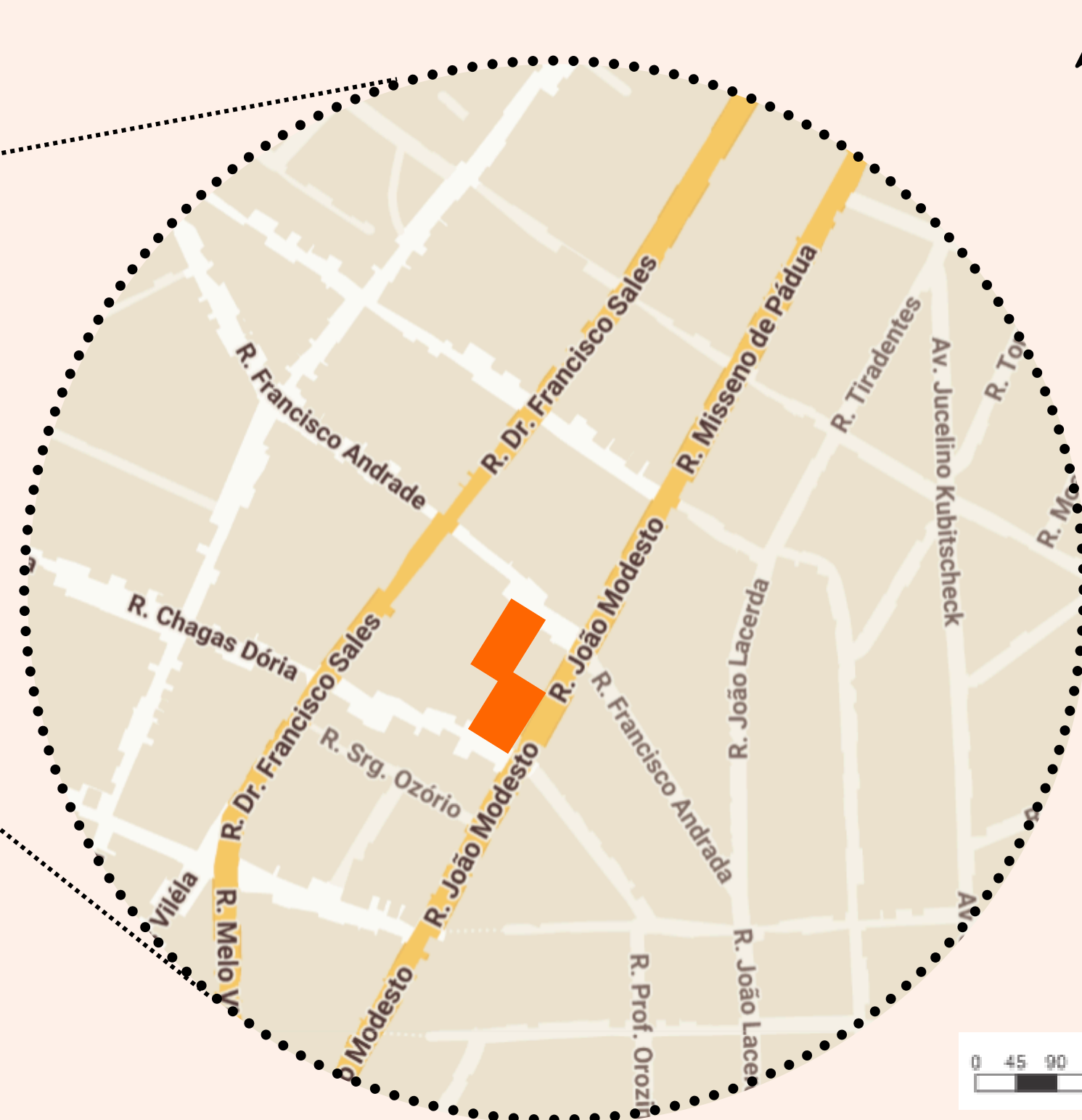
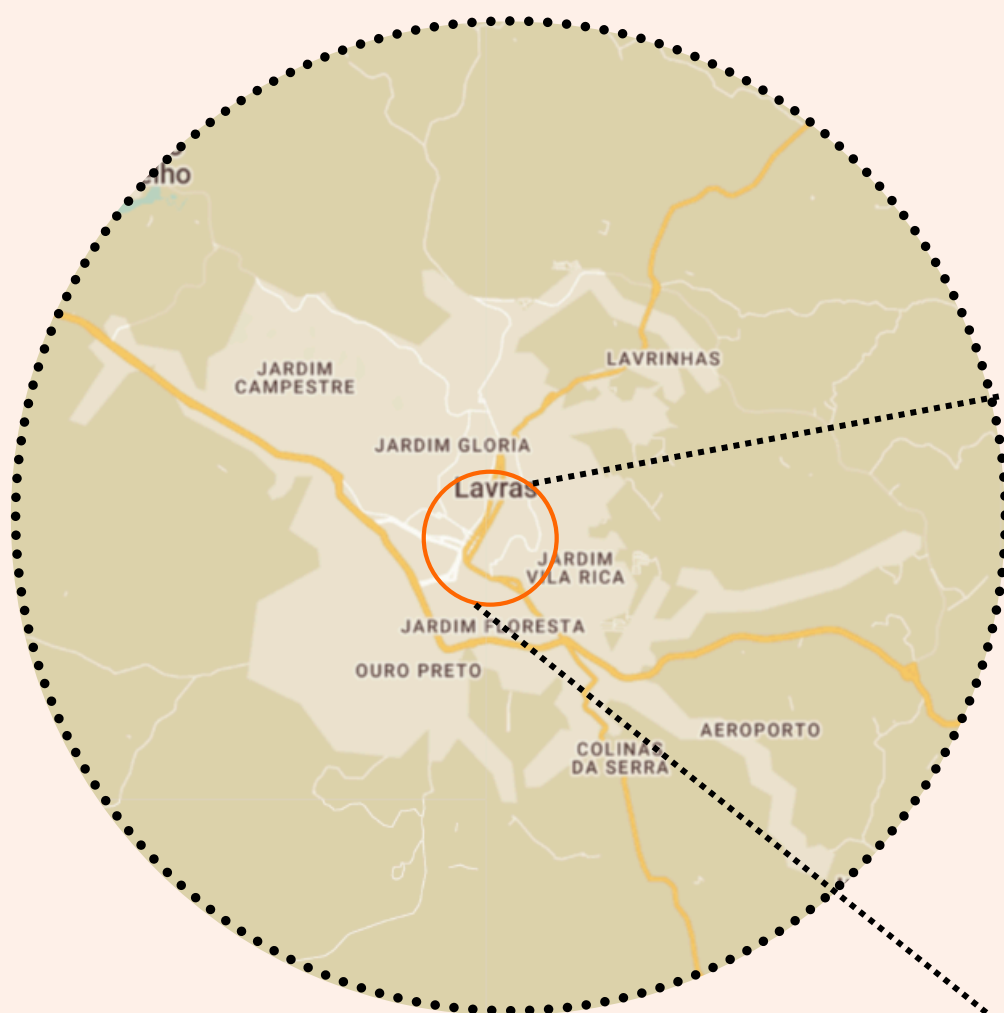
35 Detalhamento

36 Inovação

INTRODUÇÃO



SITUAÇÃO



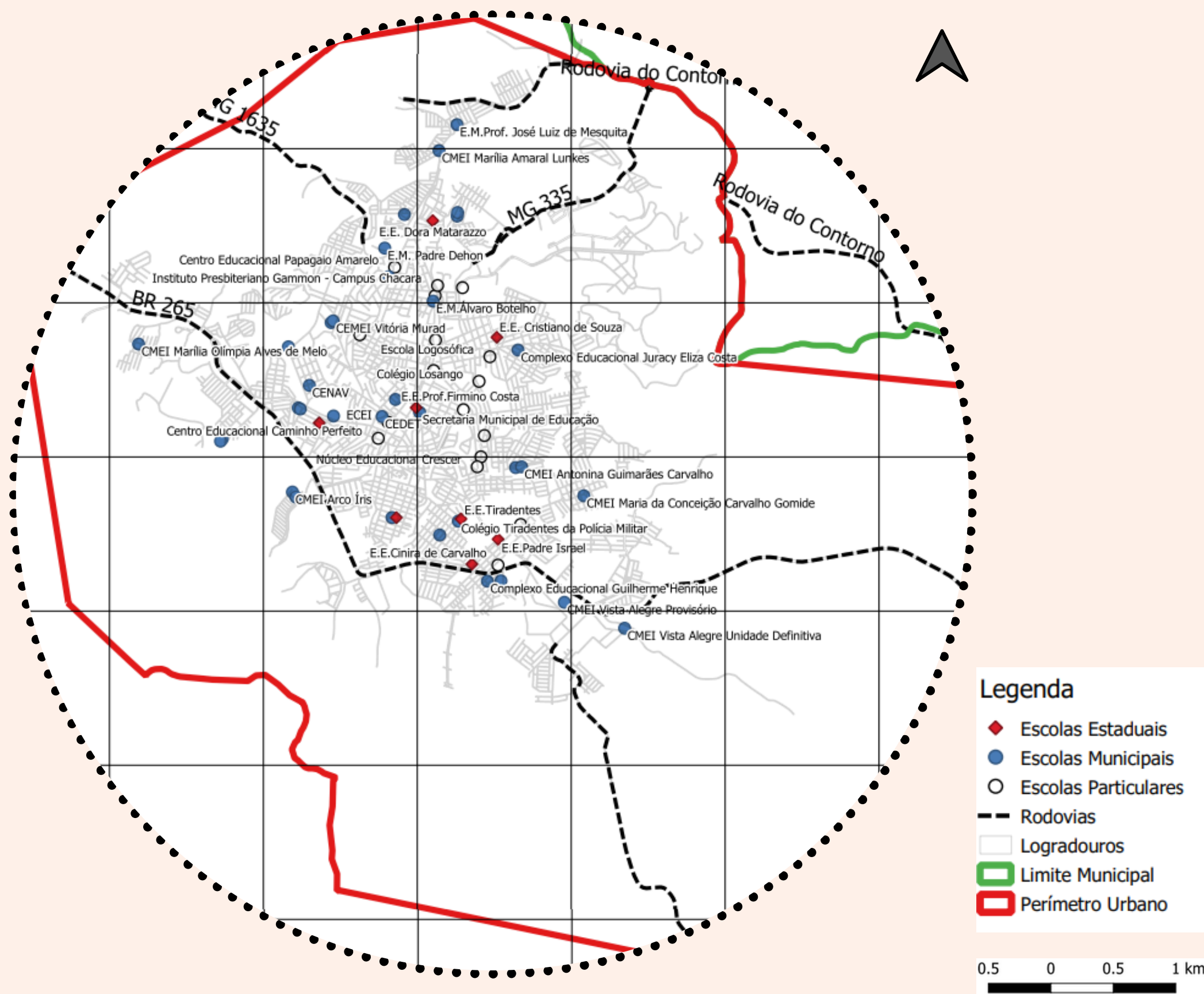
Legenda

 Terreno



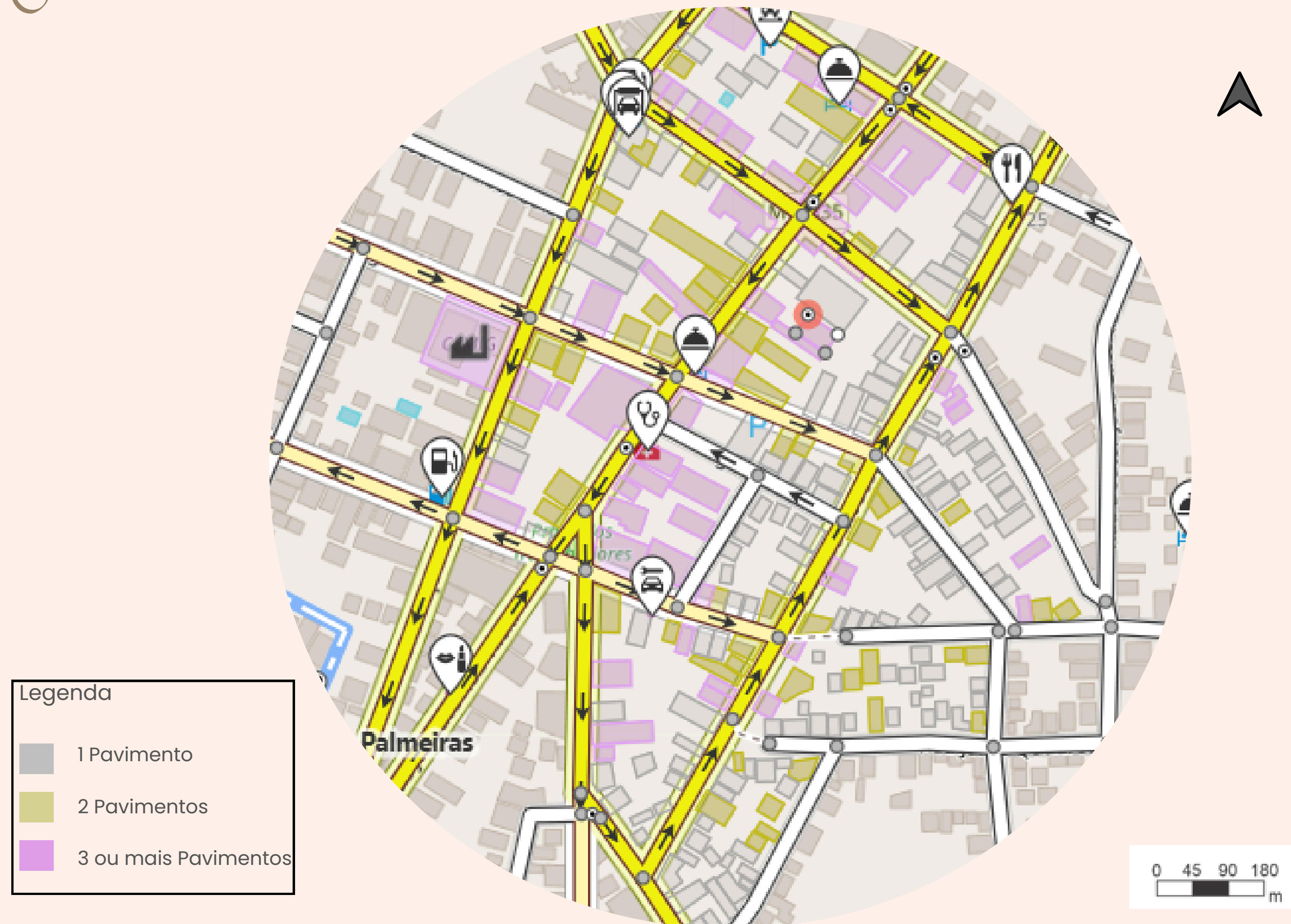
Fonte: Mapstyle (2025). Adaptado pela autora.

ÁREAS DE INTERESSE



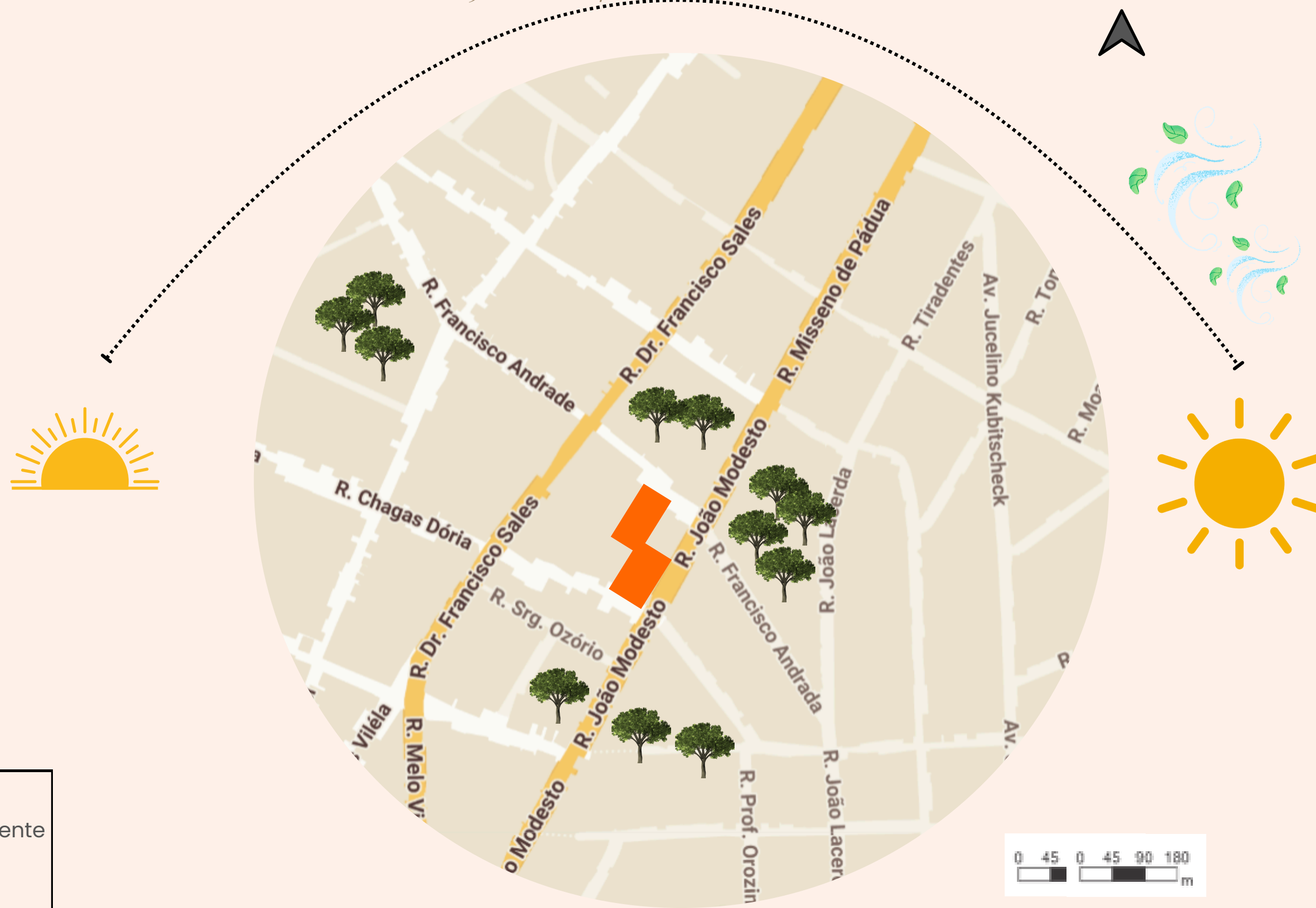
Fonte: Prefeitura Municipal de Lavras (2019)

GABARITO



Fonte: Open Street Maps (2023). Adaptado pela autora.

INSOLAÇÃO E VENTILAÇÃO / ASPECTOS AMBIENTAIS

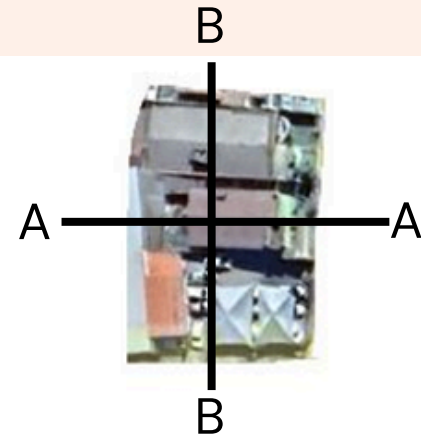


Legenda

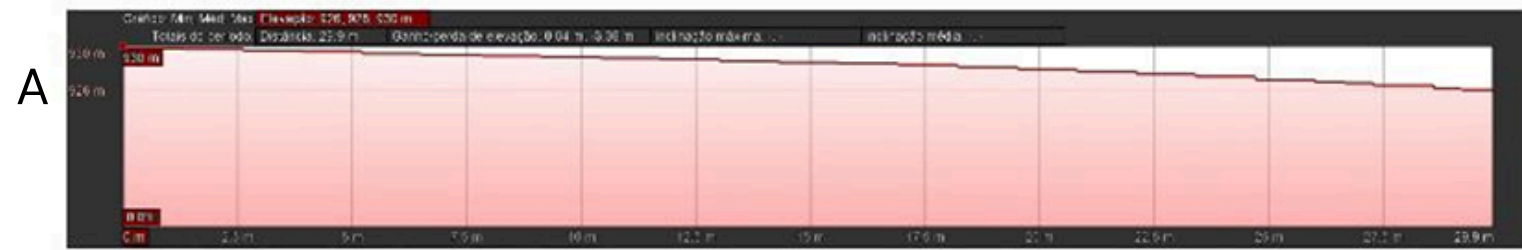
-  Arborização Existente
-  Terreno

Fonte: Mapstyle (2025). Adaptado pela autora.

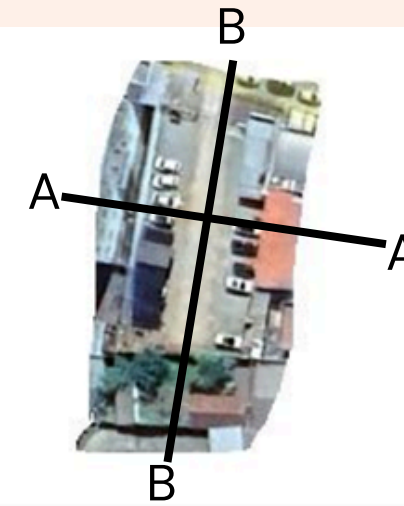
TOPOGRAFIA



TRANSVERSAL



LONGITUDINAL



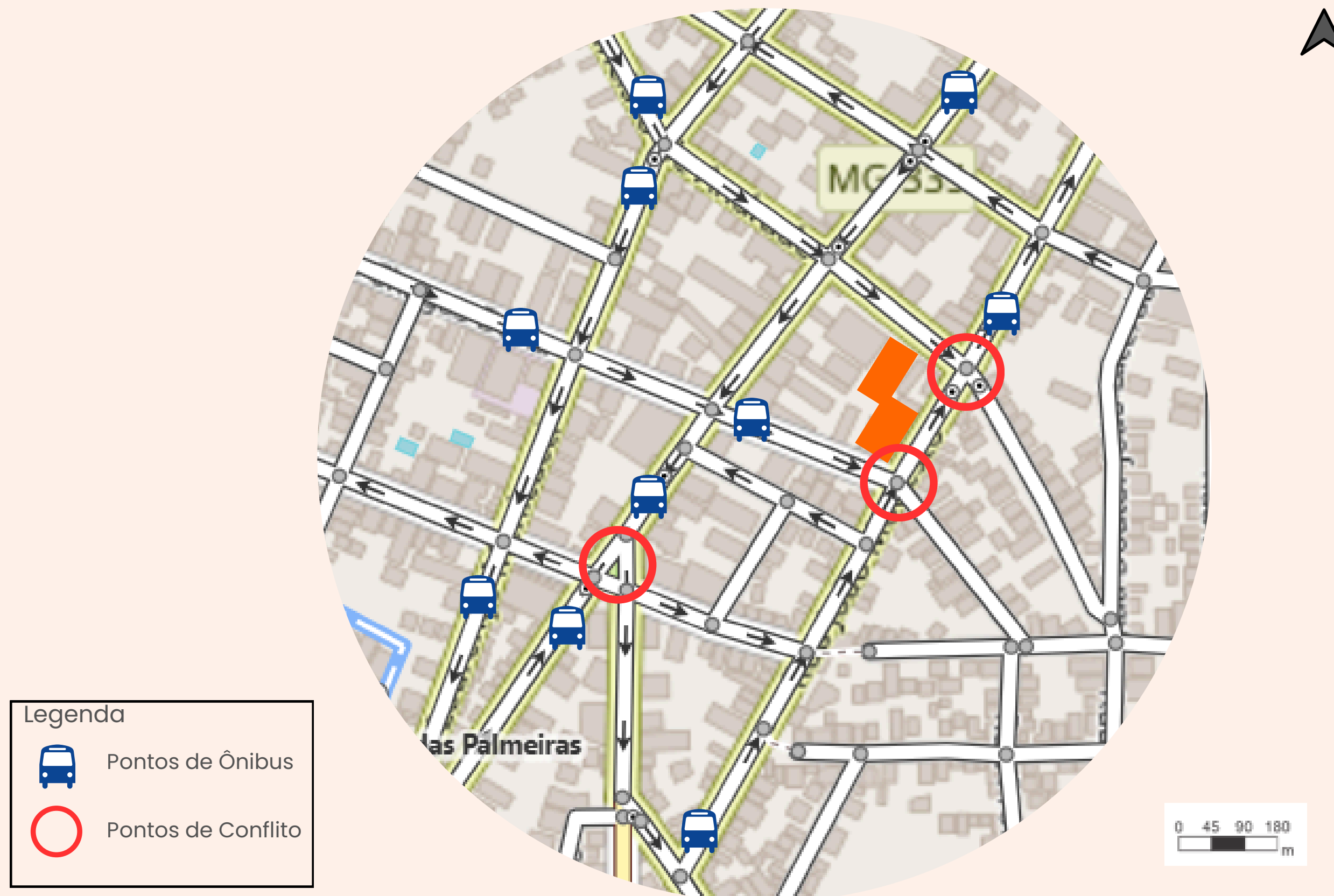
TRANSVERSAL



LONGITUDINAL

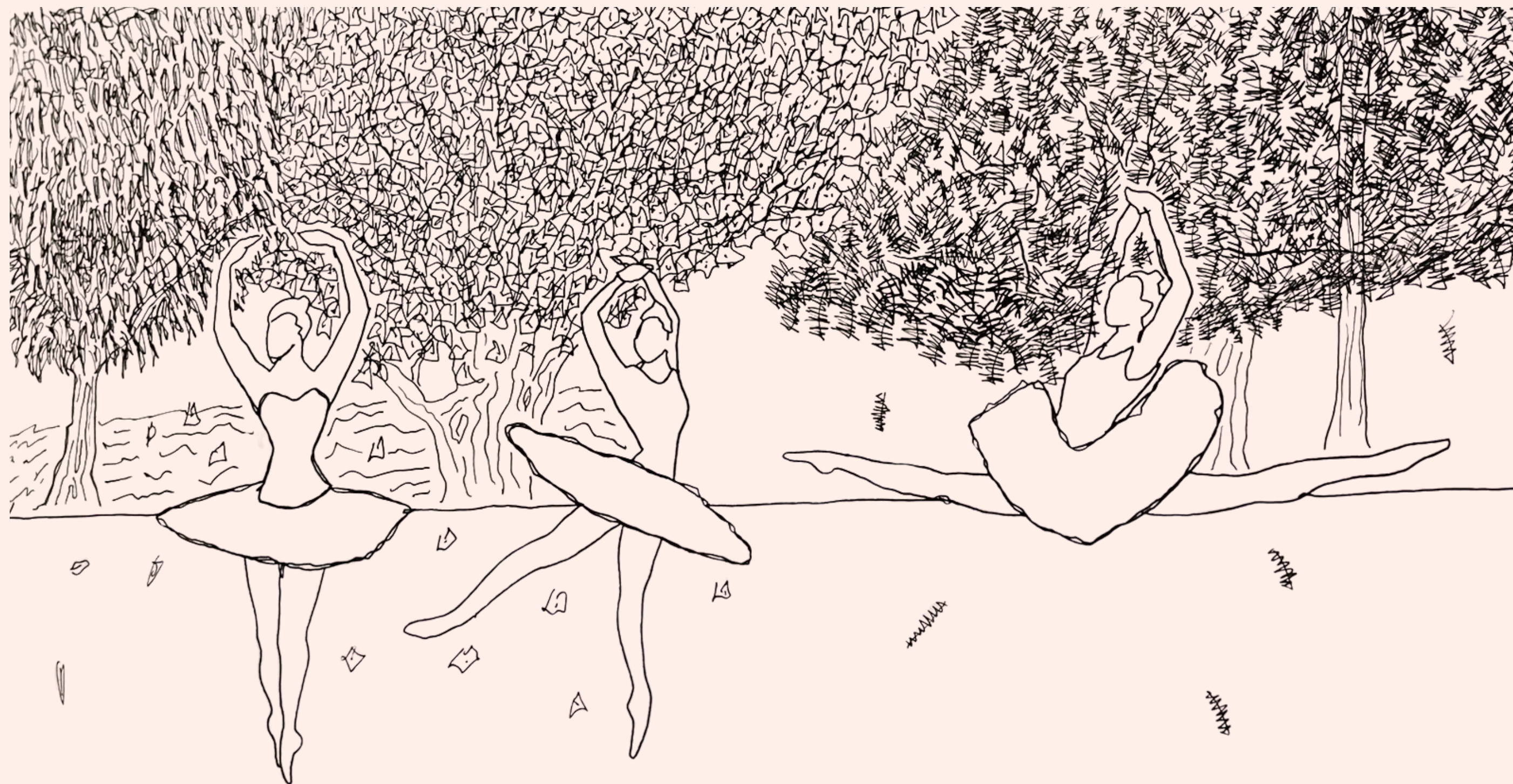


PONTOS DE ÔNIBUS E PONTOS DE CONFLITOS



Fonte: Open Street Maps (2023). Adaptado pela autora.

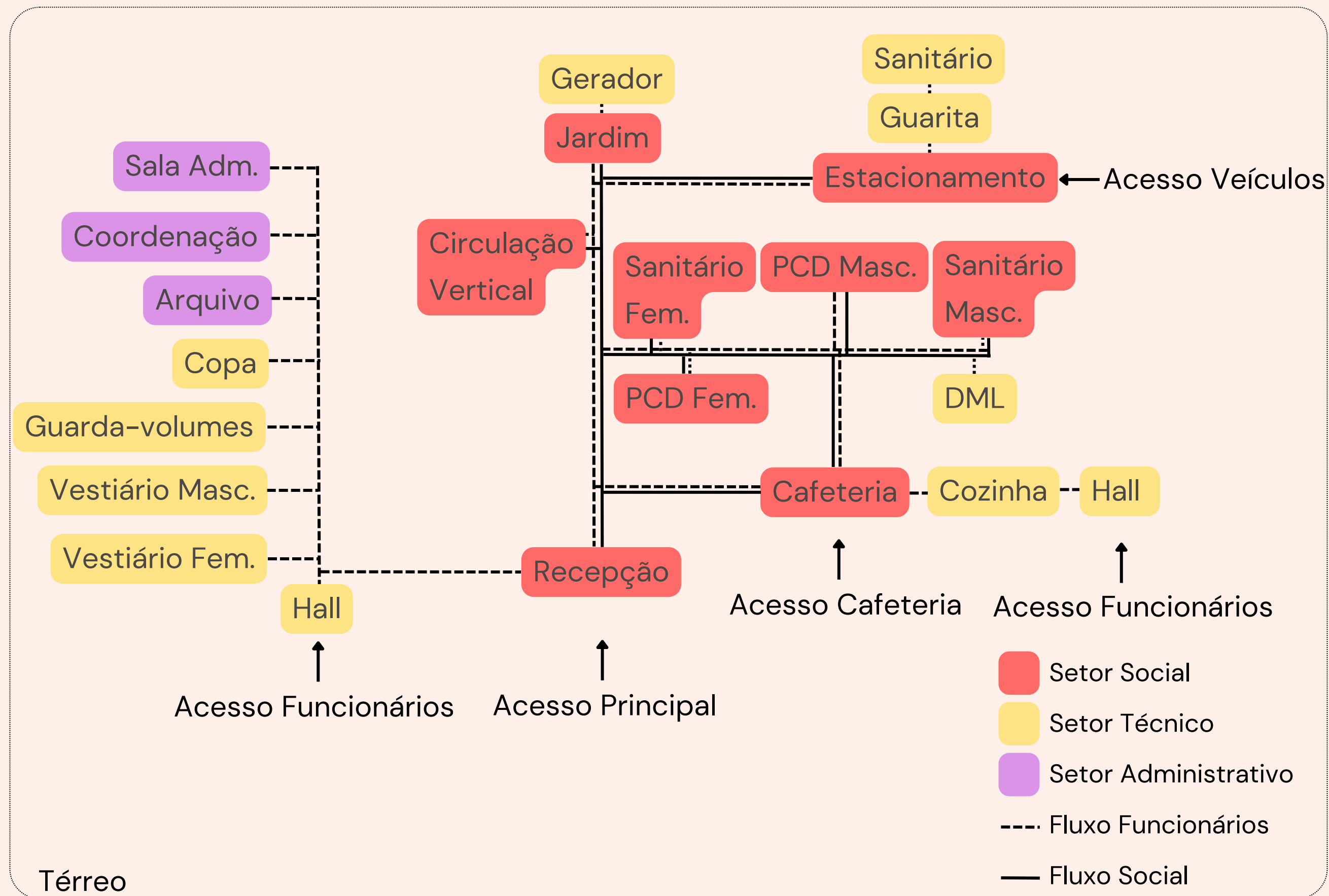
CONCEITO



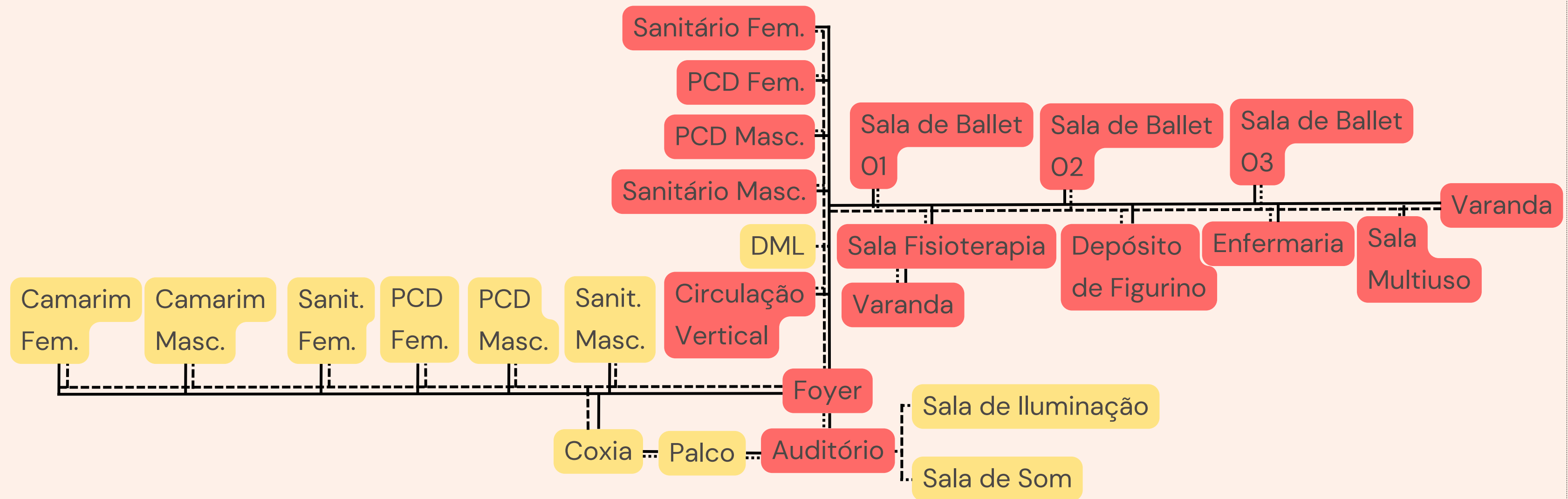
PARTIDO



FLUXOGRAMA



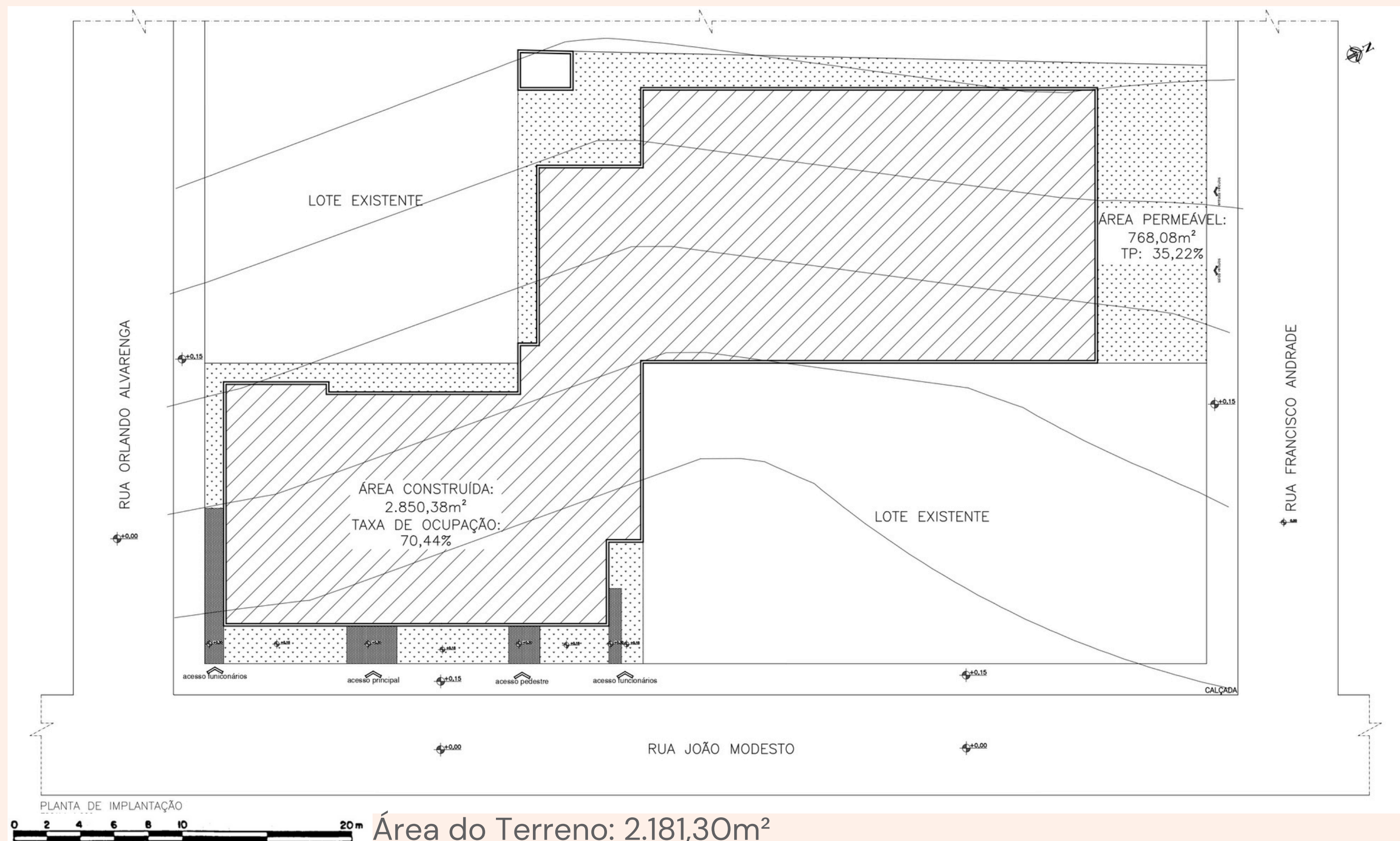
FLUXOGRAMA



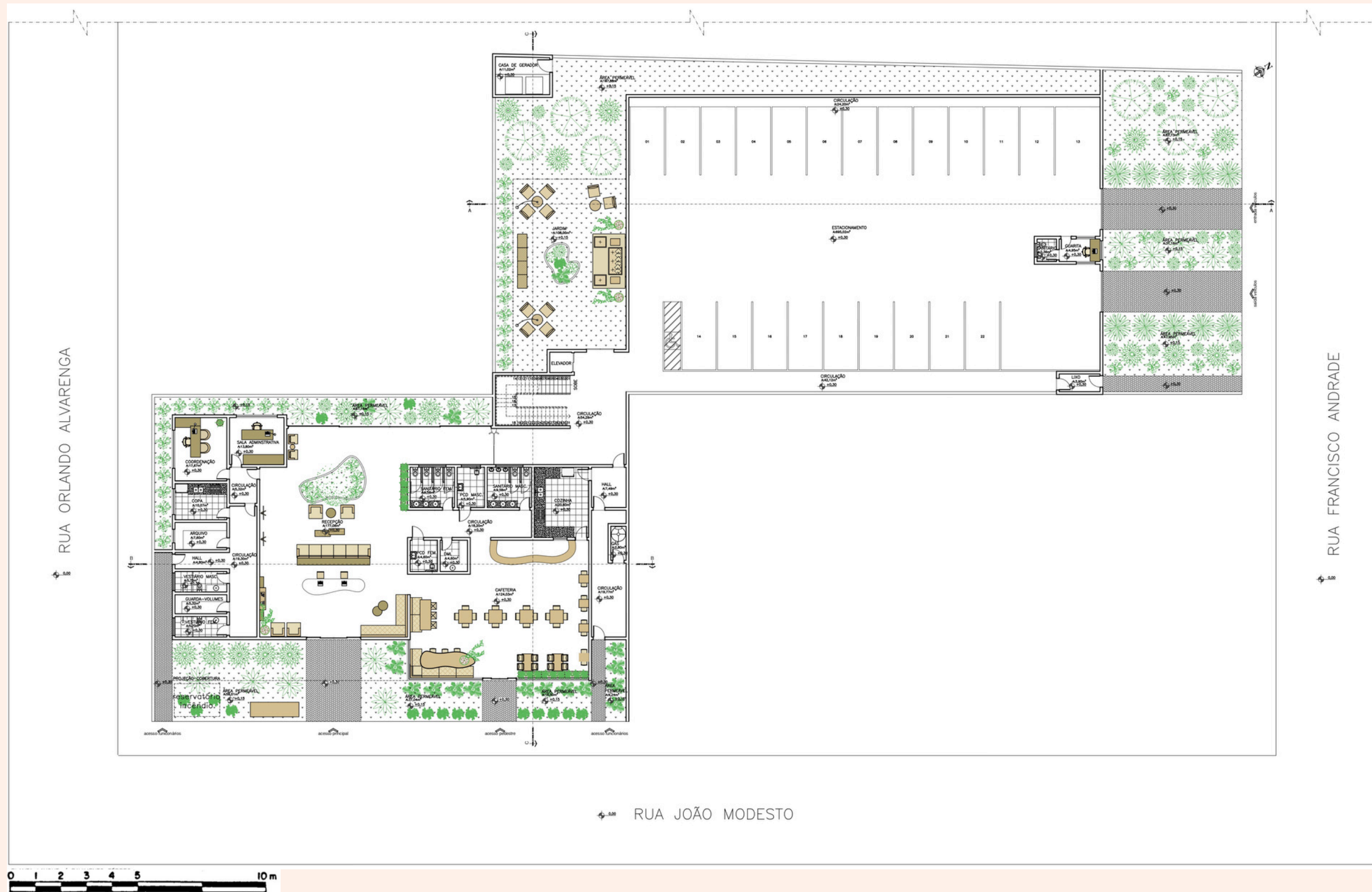
- Setor Social
- Setor Técnico
- Setor Administrativo
- Fluxo Funcionários
- Fluxo Social

1º Pavimento

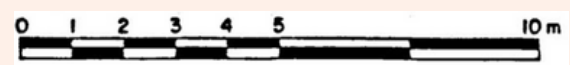
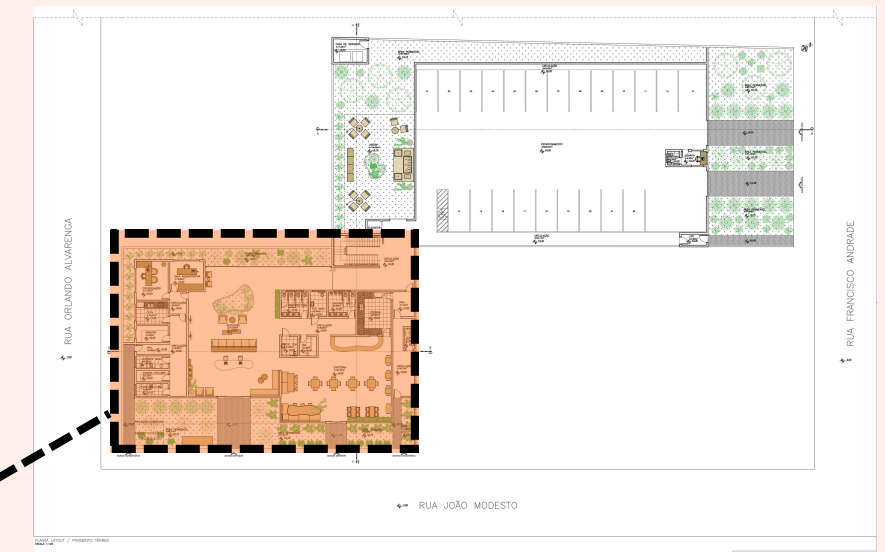
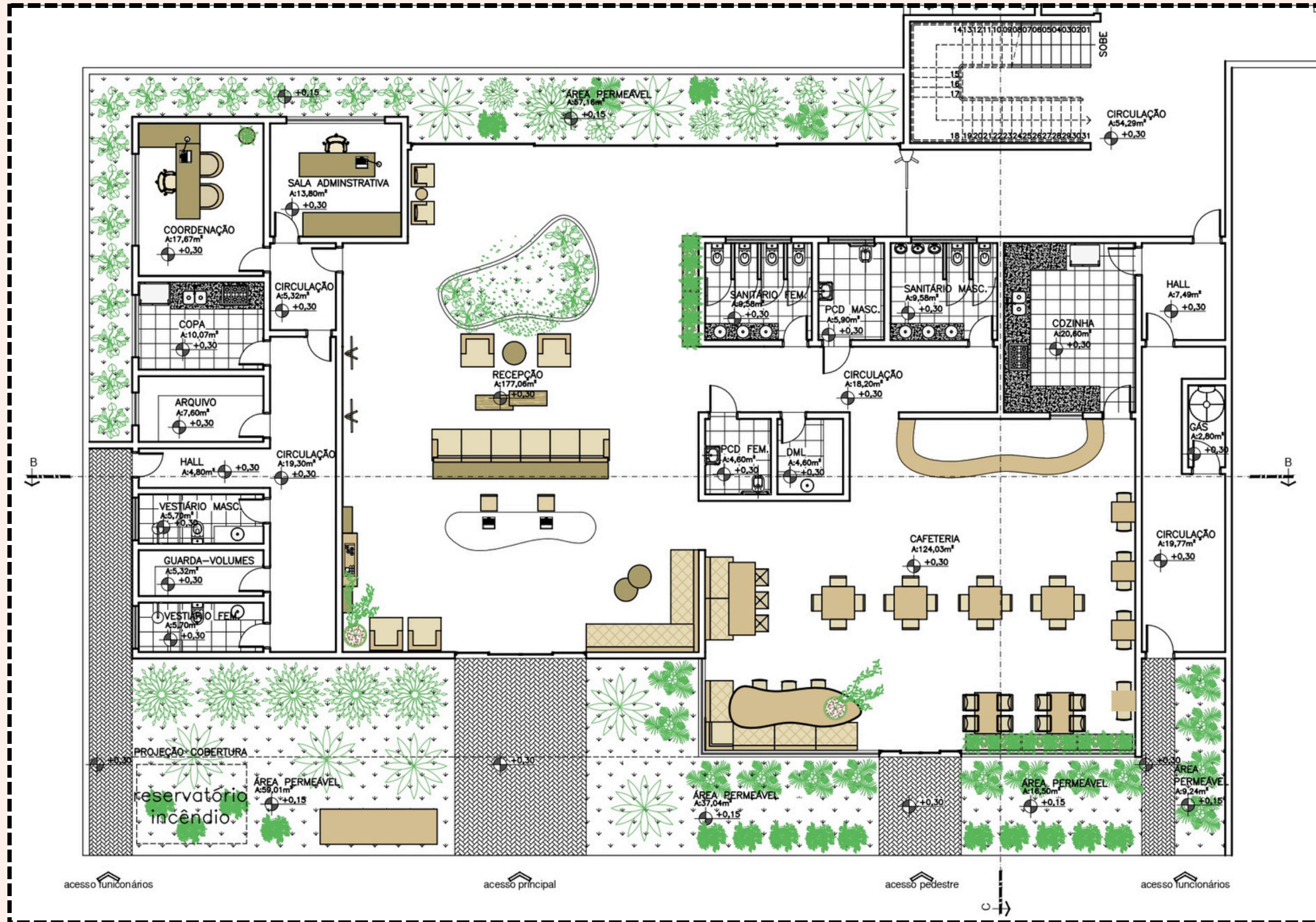
IMPLANTAÇÃO



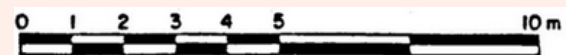
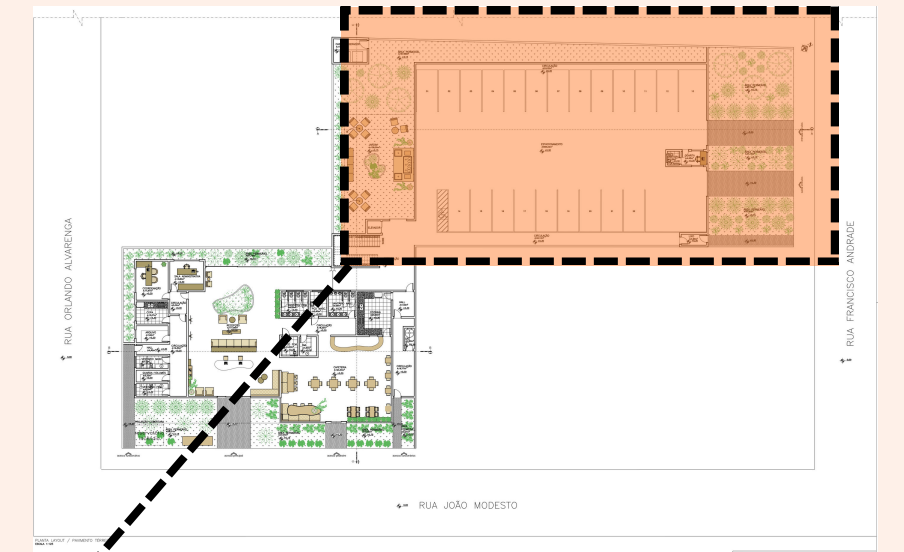
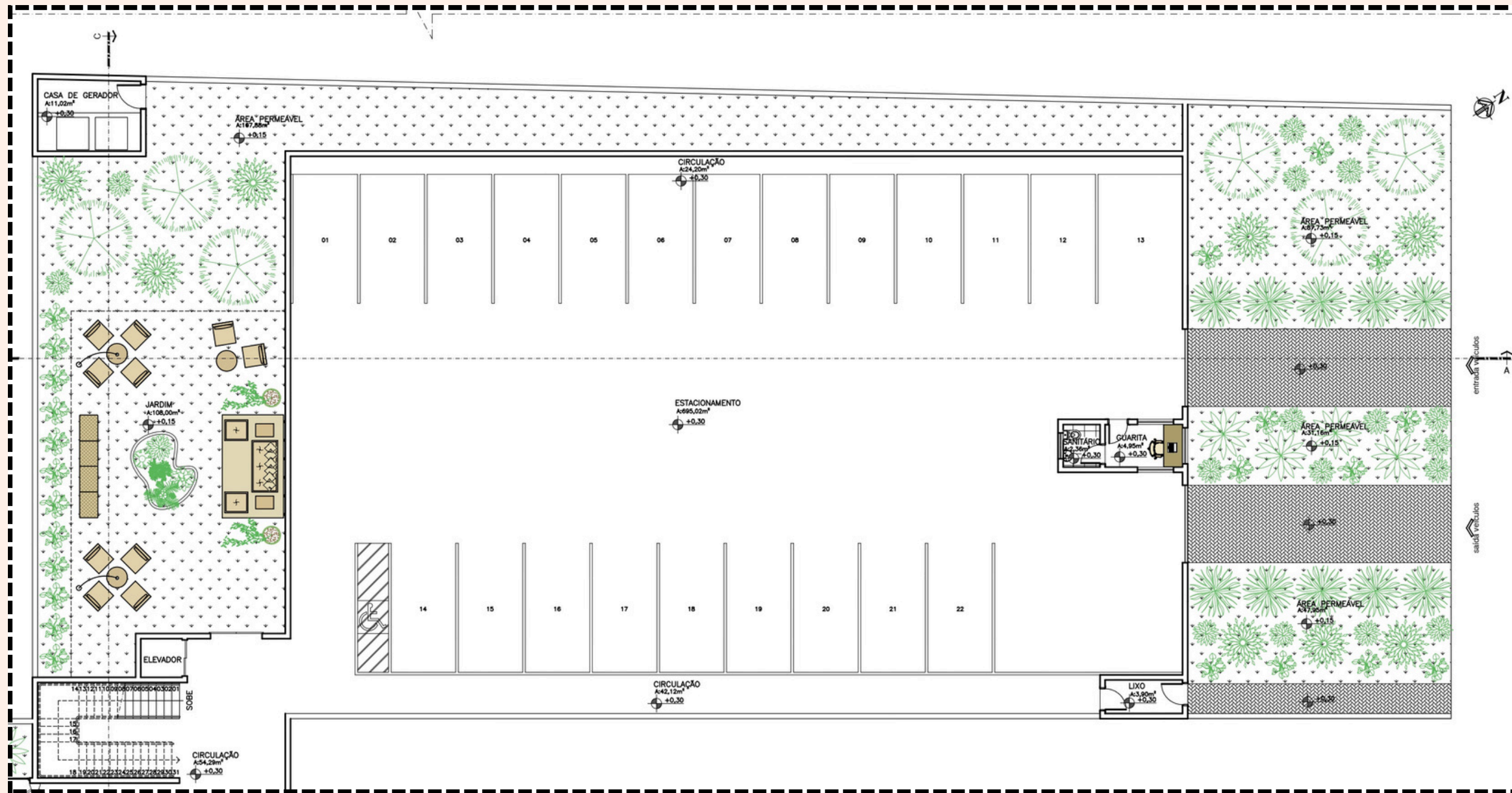
PLANTA GERAL DE LAYOUT



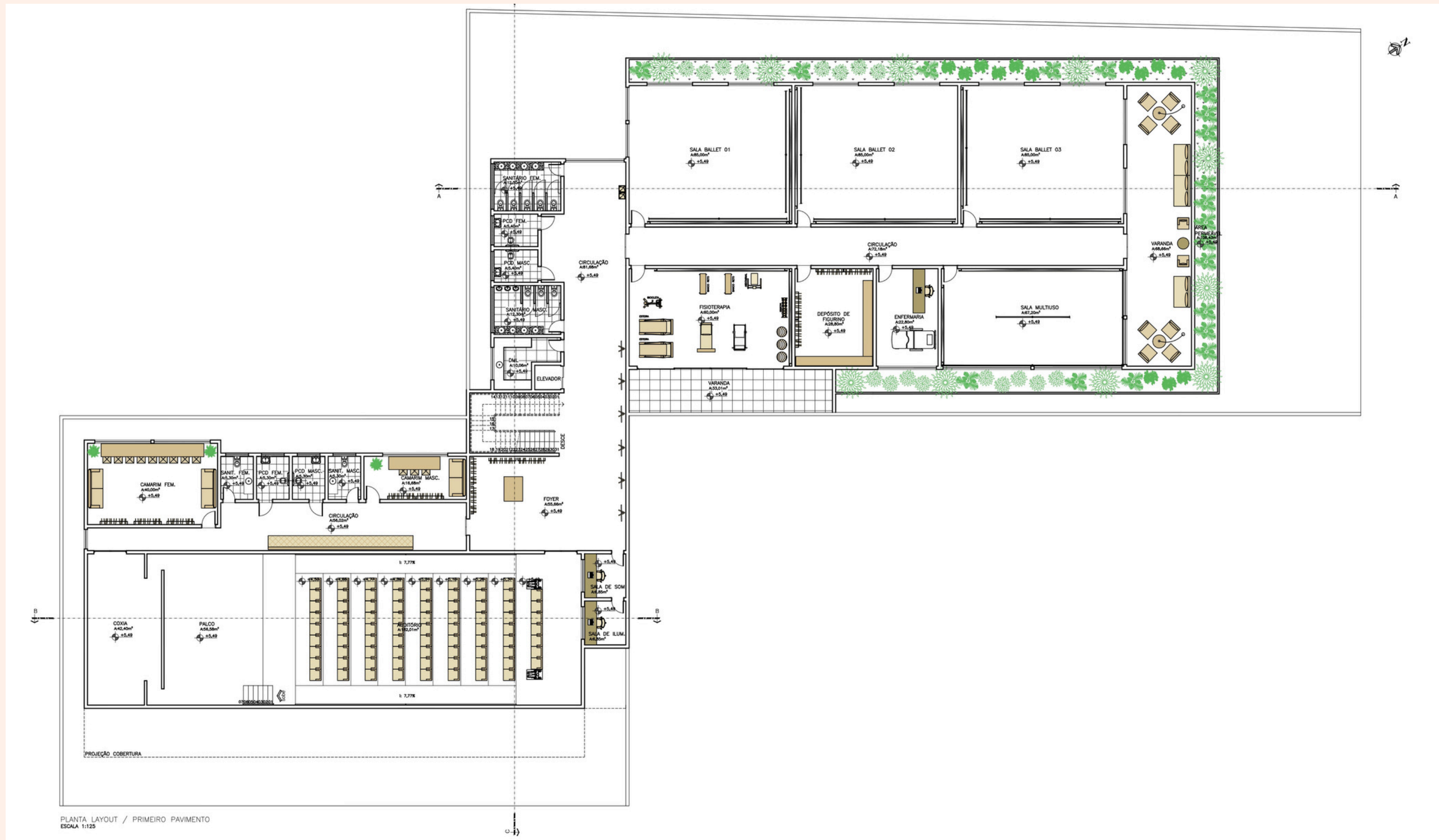
PLANTA DE LAYOUT



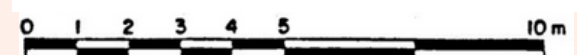
PLANTA DE LAYOUT



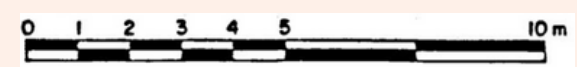
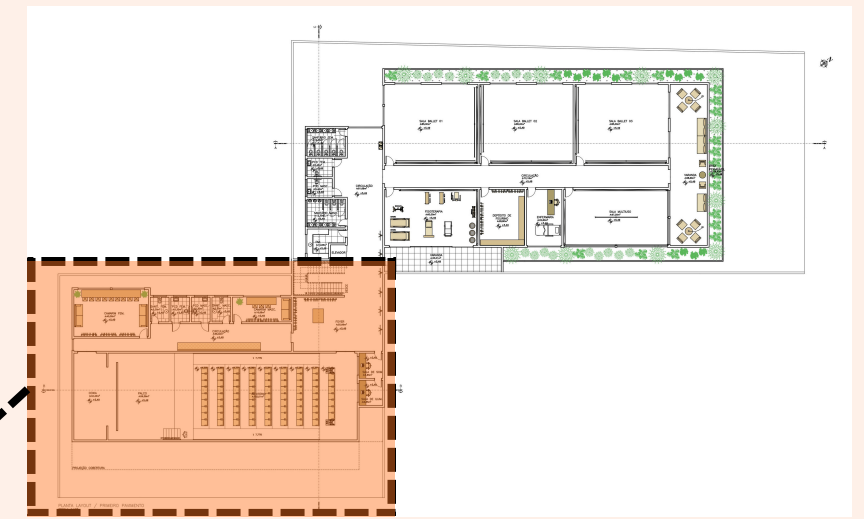
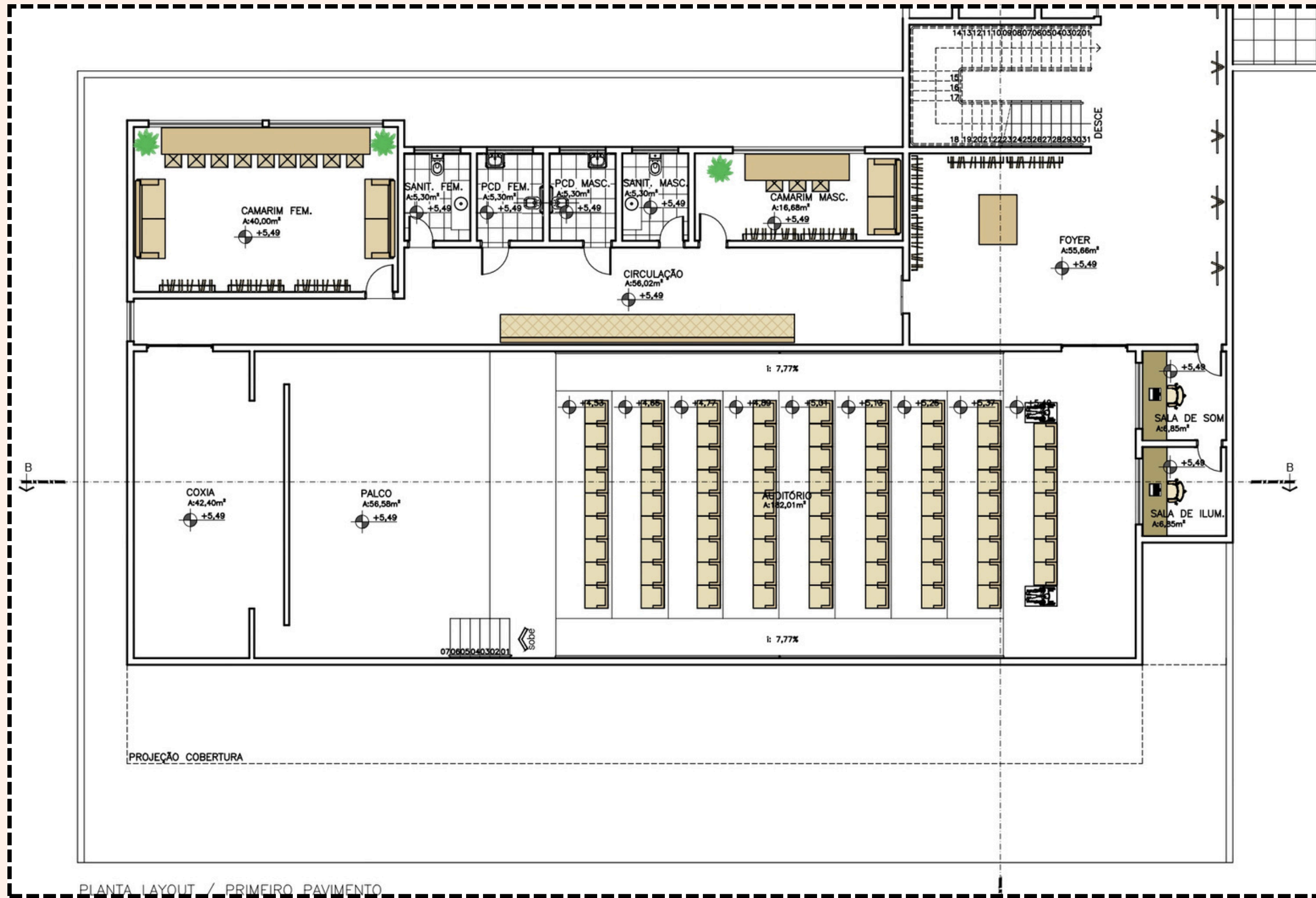
PLANTA GERAL DE LAYOUT



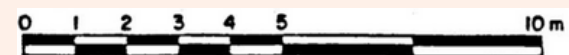
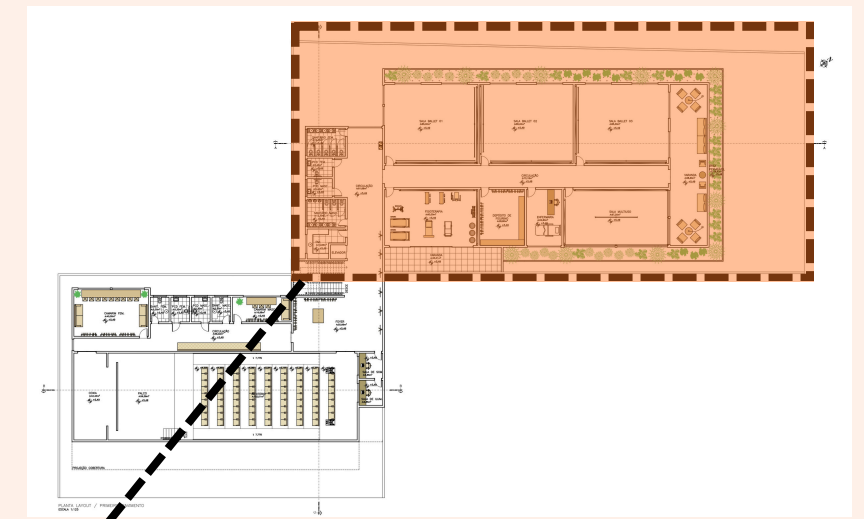
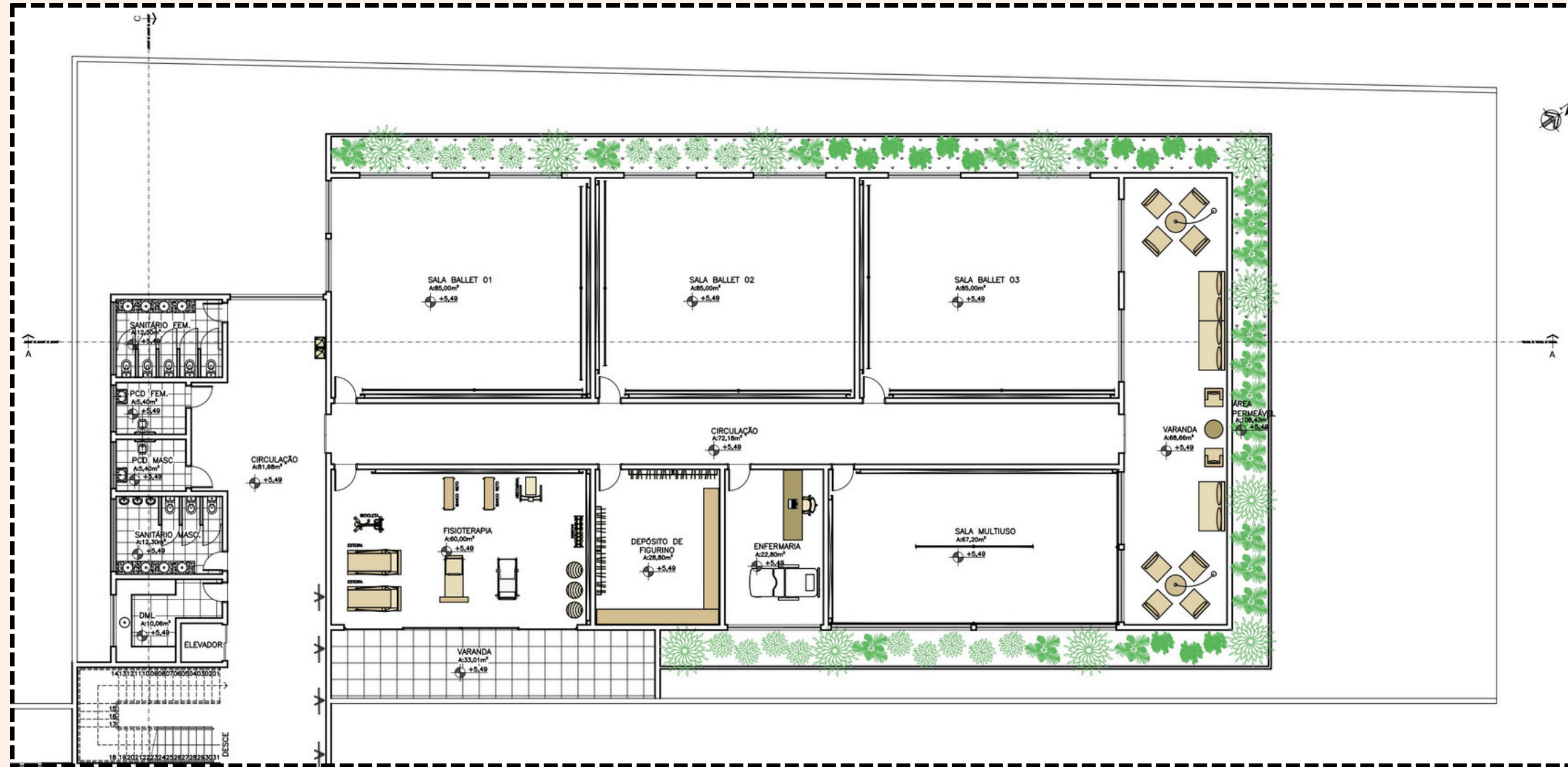
PLANTA LAYOUT / PRIMEIRO PAVIMENTO
ESCALA 1:125



PLANTA DE LAYOUT



PLANTA DE LAYOUT



PERSPECTIVA





 étoile
ballet



étoile

ballet





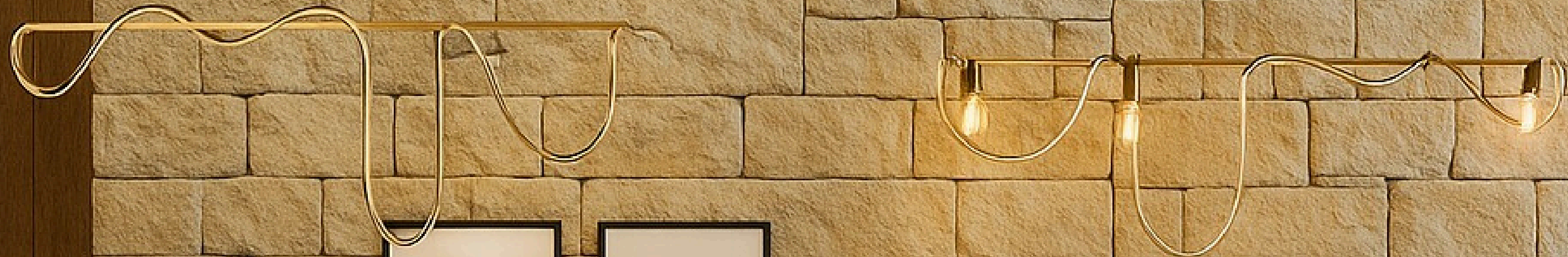






CONSIGLIO
A FIDELITÀ
PUNTO DI RIFUGIO
A TUTTA ORE
LUNA DI MARE

callon
L'idea di un caffè, un bar, un punto di incontro
per il quale la qualità è al centro.



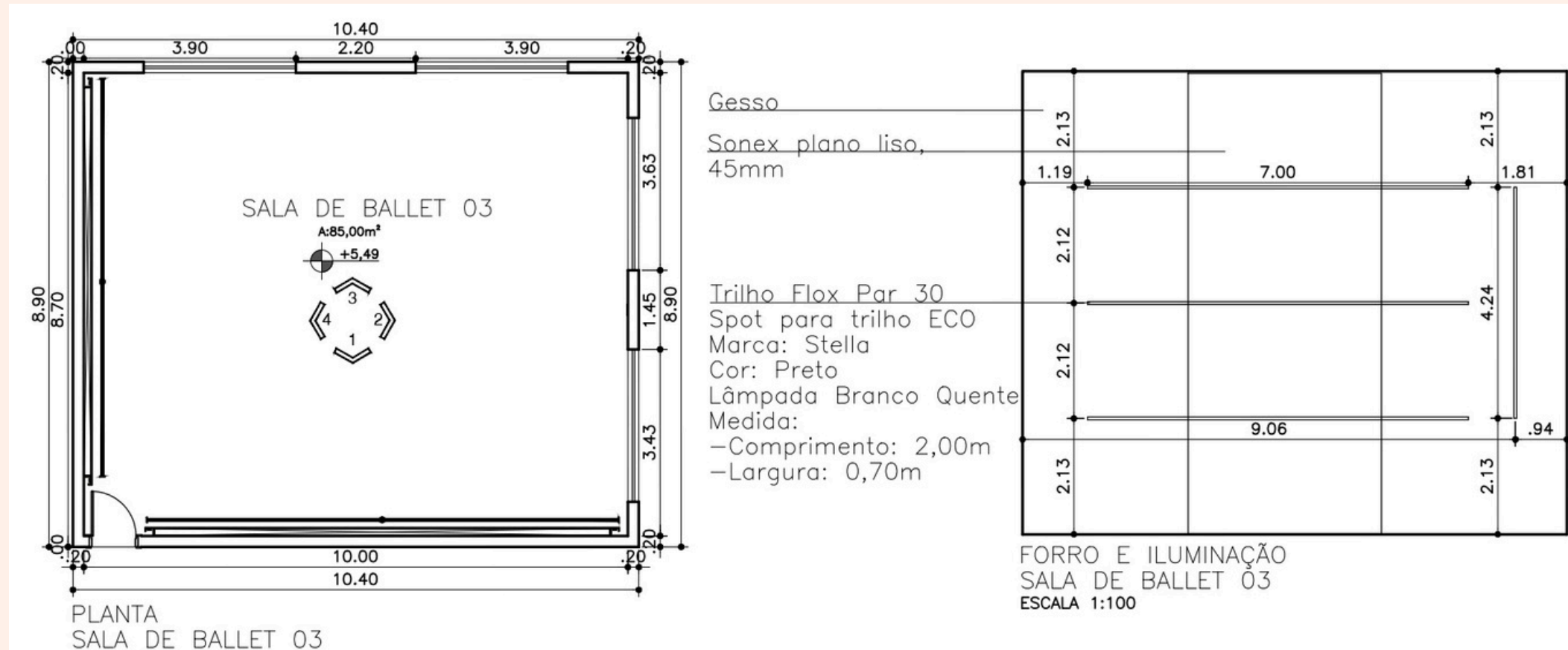
GALLIED
DNIRISTY
PHOBRIBD
BERES.

coffee
Chewy to crust, sweet
inside, like a warm blanket.
3oz



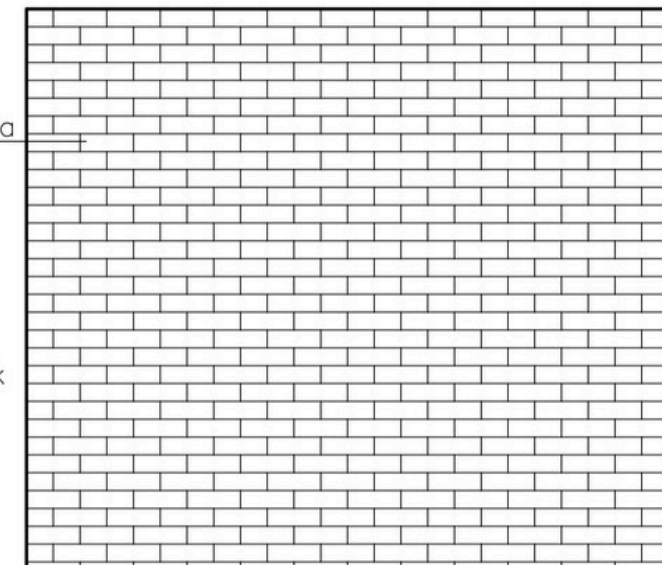


DETALHAMENTO



Volume do Ambiente:		370,24m ³		
Materiais	Área (m ²)	Frequências (Hz)		
		125	500	2000
Piso (Laminado)	92,56	0,07	0,15	0,07
Teto (Geso Acartonado)	92,56	0,29	0,12	0,06
Paredes pintadas	103,20	0,01	0,02	0,02
Espelhos	12,48	0,02	0,02	0,02
Janelas com cortinas finas	36,72	0,05	0,25	0,40
Porta (Madeira)	2,00	0,08	0,10	0,12
Mobiliário/barras	2,00	0,10	0,10	0,10
Sonex plano liso, 45mm (no teto)	20,00	0,12	0,88	0,97
16 pessoas				
Total		35,80	60,08	58,87
Tempo de Reverberação (s)		1,66	1,00	1,01
TR ótimo - 500 hz	1,00s			
Frequência (Hz)		125	500	2000
Tempo de Reverberação ótimo (s)		1,80	1,00	1,10

Piso Laminado de Madeira
 Marca: Eucafloor
 Cor: Carvalho Ouro
 Medidas:
 -Comprimento: 1,35m
 -Largura: 0,44m
 -Espessura: 8mm
 Embalagem: 2,41m²
 Sistema de Encaixe: Click



PAGINAÇÃO DE PISO
 SALA DE BALLET 03
 ESCALA 1:100

INOVAÇÃO

Dispositivos Tecnológicos







OBRIQ. ADA