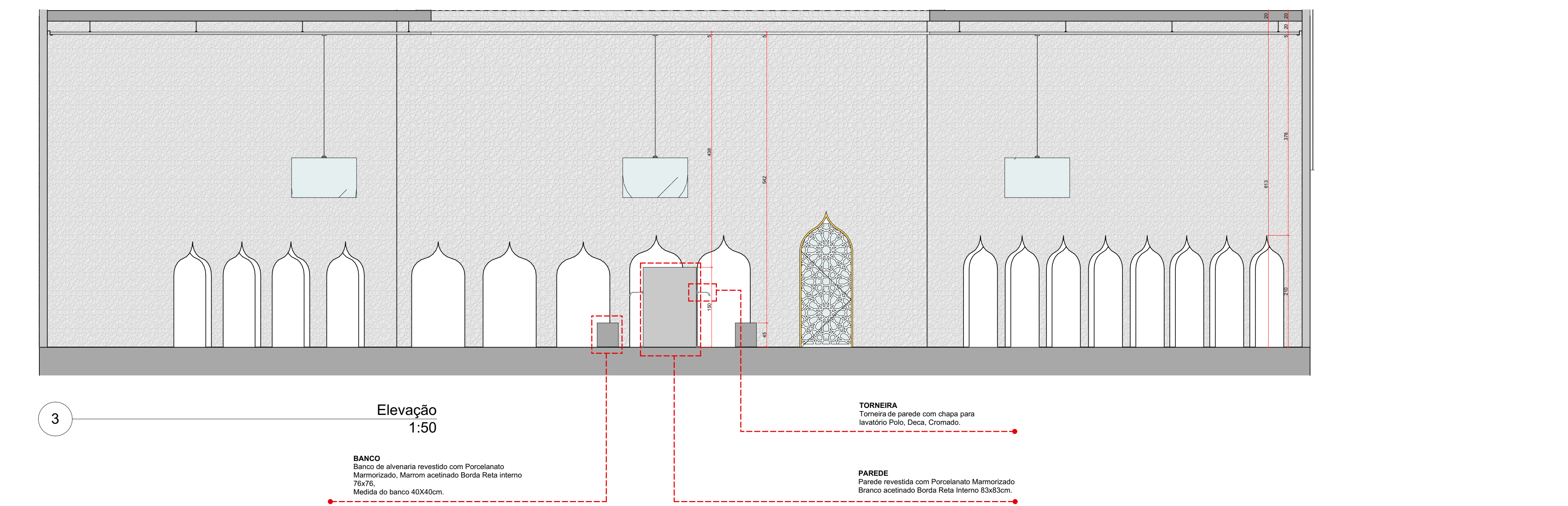


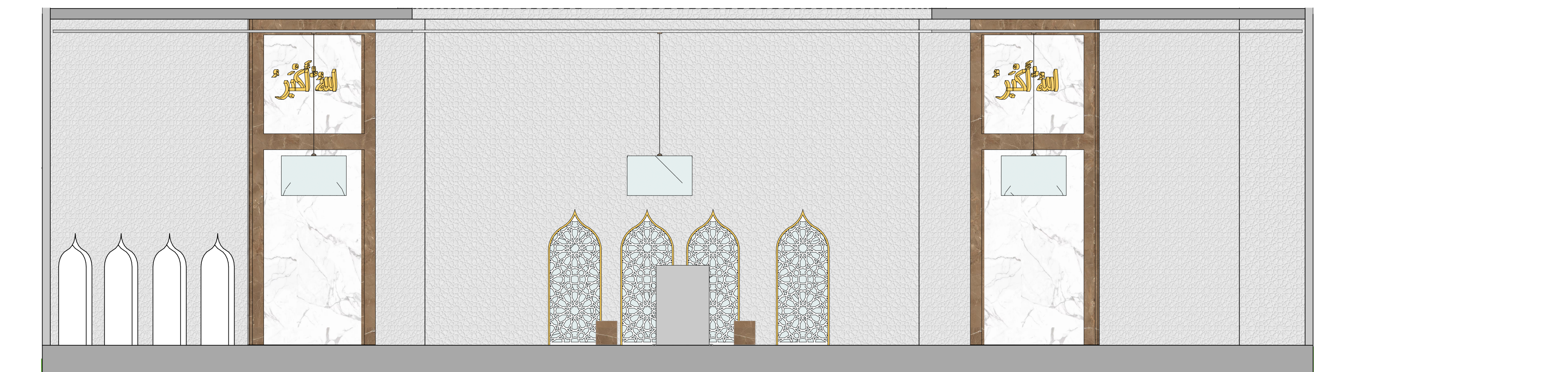
1 Elevação (1)
1:50



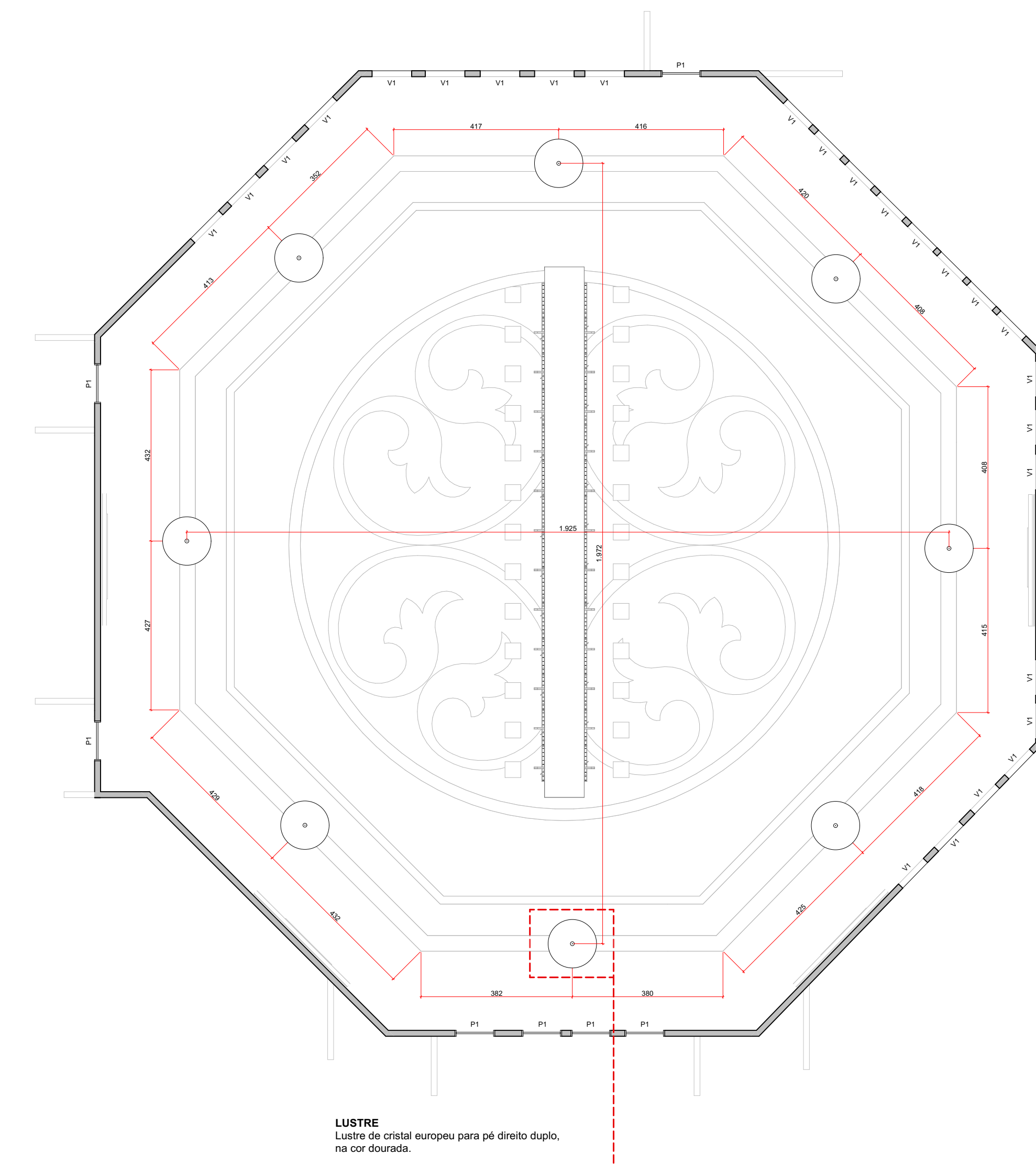
2 Elevação
1:50



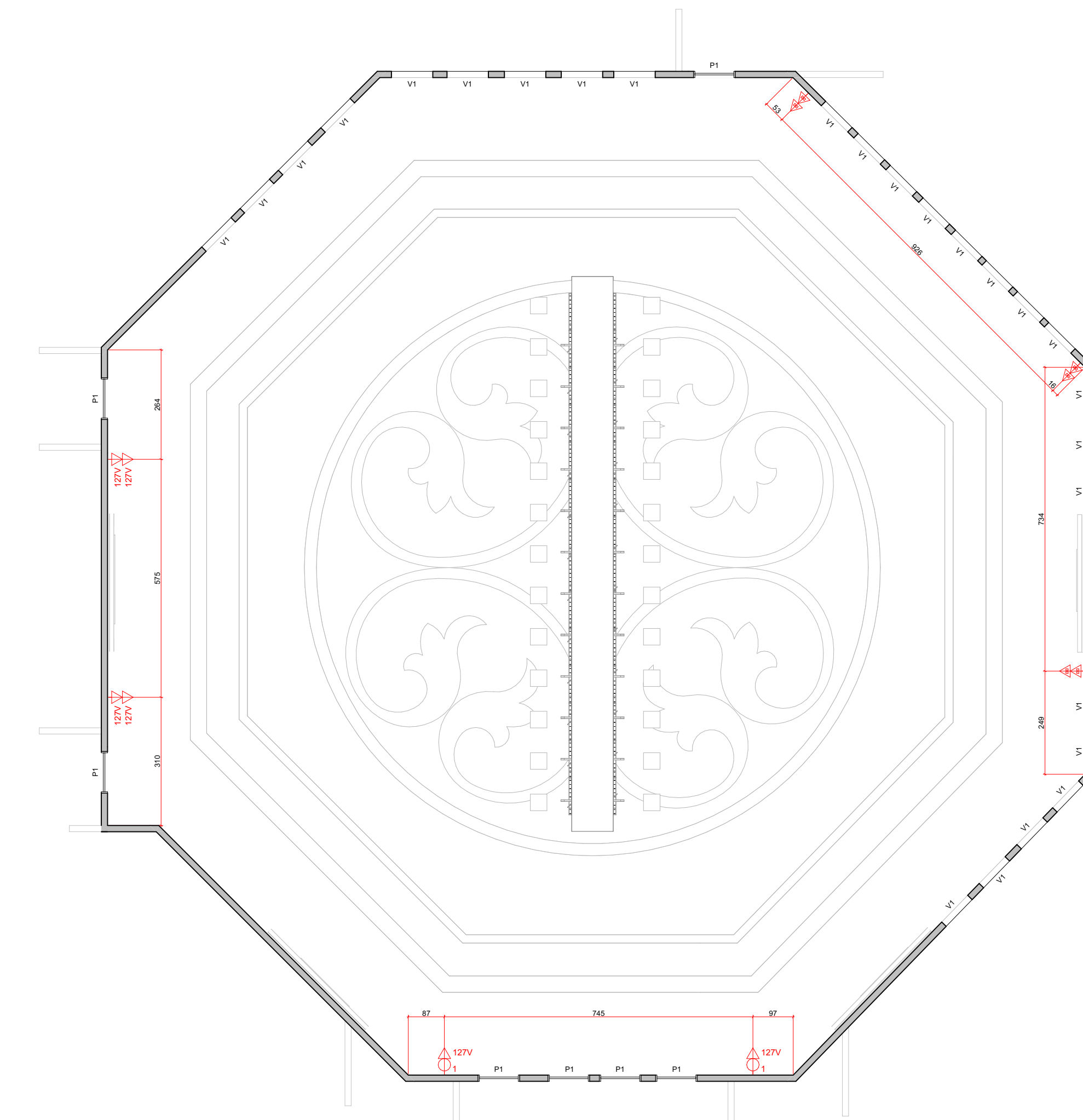
3 Elevação
1:50



4 Elevação (1)
1:50

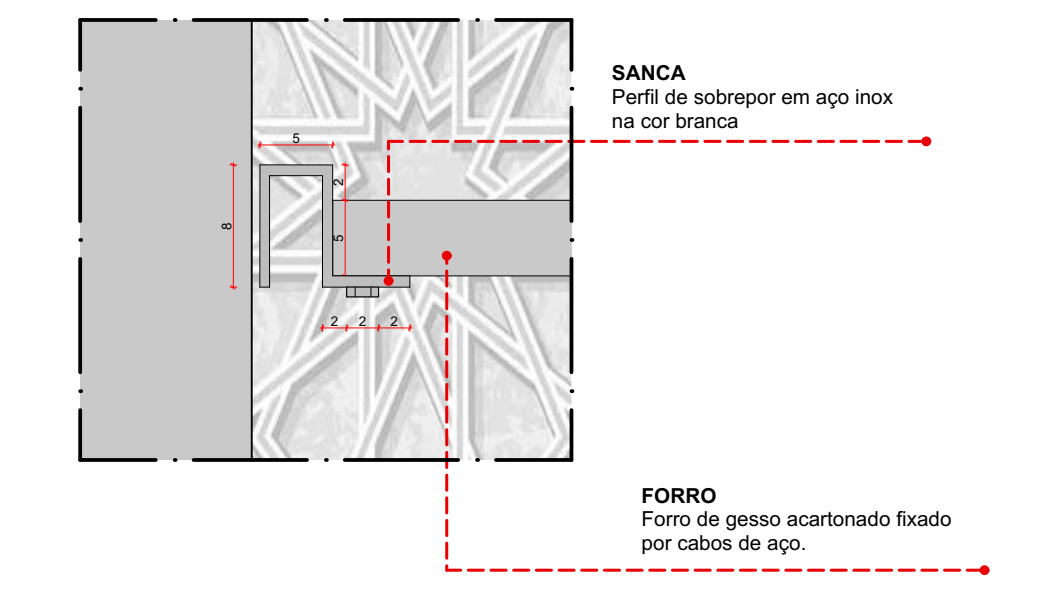


0 PLANTA BAIXA ILUMINAÇÃO
1:100

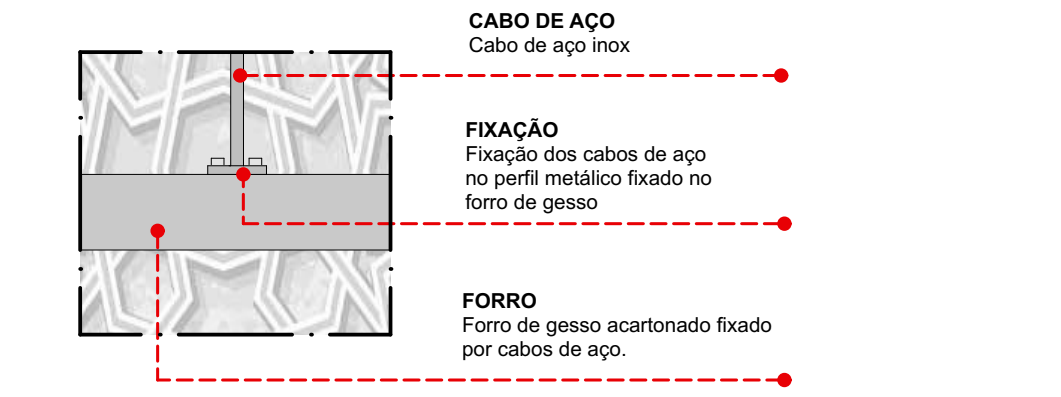


0 PONTOS ELÉTRICOS
1:100

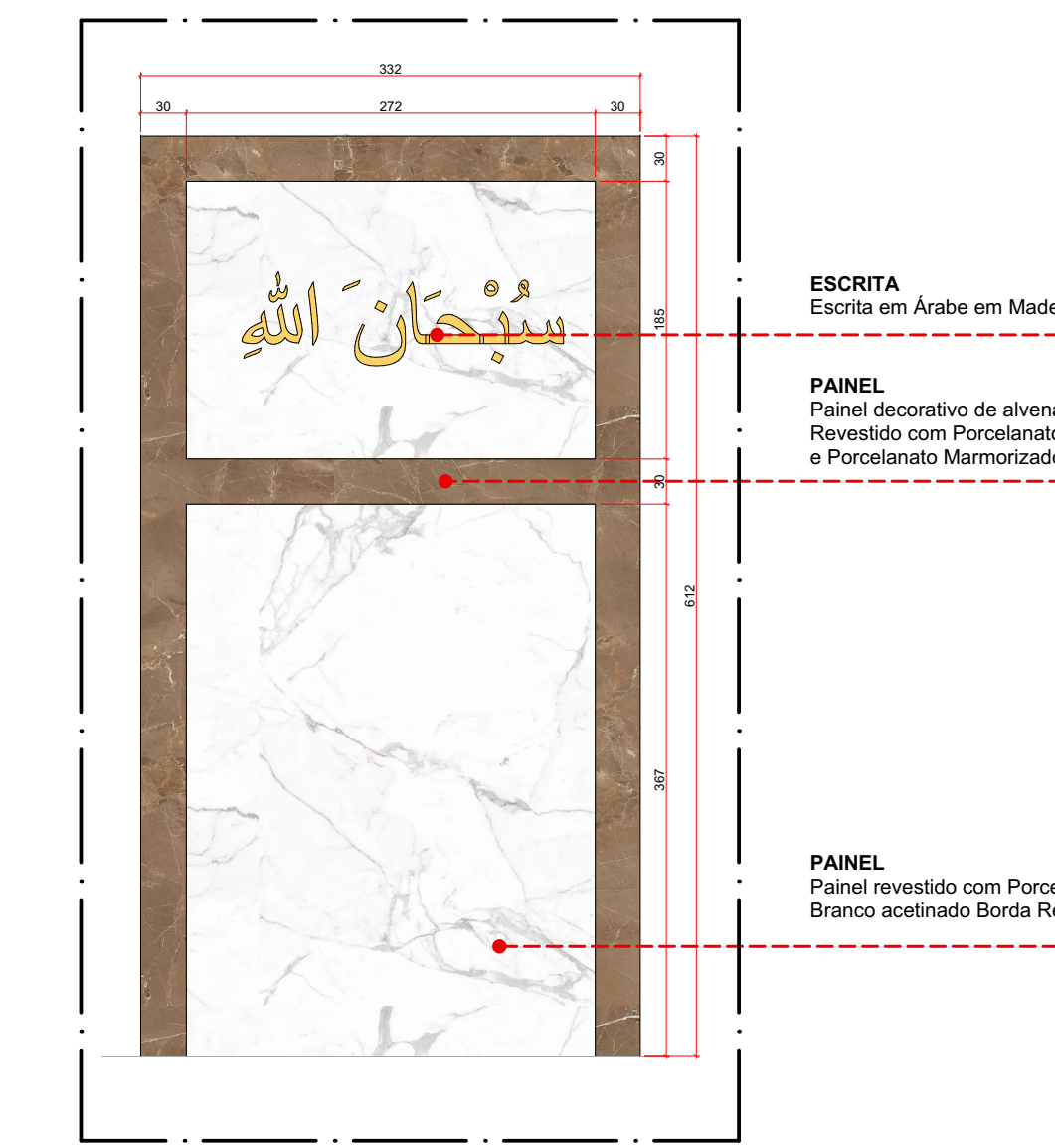
PONTOS ELÉTRICOS	
	TOMADA LUIS 30cm de altura
	INTERRUPTOR E TOMADA 120cm de altura
	2 TOMADAS 120cm de altura



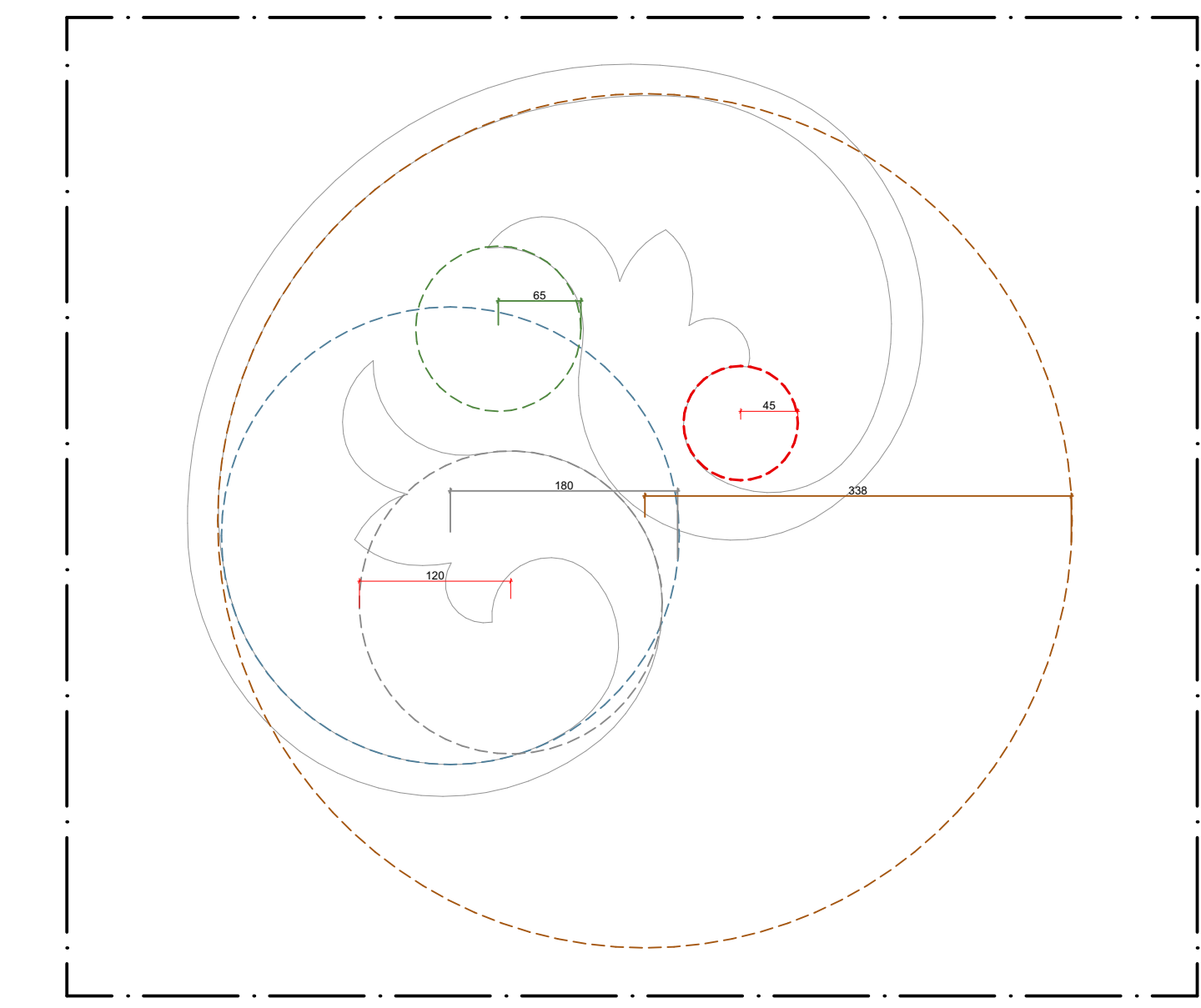
2 Det. (2)
1:5



3 Det.
1:5



4 Det. (2)
1:50



5 Det.
1:50